



NATIONAL CONSTRUCTION SUMMIT 2024

April 18th 2024, Sport Ireland Campus, Blanchardstown

In Partnership With



ela[container]



Polish Investment & Trade Agency
PFR Group

Portakabin®

allied.ie



Flanagan Fittings

FAILTE SOLAR
- GO GREEN GO SOLAR -



POWERWASHING IRELAND

OPENSOURCE

VITRINTEC®
wall solutions

SALTO
inspiredaccess

Keniry Advisory Services

Free WiFi: Event Org: uGdvn93J

www.nationalconstructions summit.ie

in National Construction Summit

@ConstructSummit #ConstructIRE

Main Stage - The National Construction Summit

The National Construction Summit

Times	Name	Topic
9.55-10.00	David Keniry, Keniry Advisory Services	Opening Remarks
10.00-10.30	Fireside Chat: Johanna Murphy, Estate Agent, Johanna Murphy & Sons and Carol Tallon, Director, Property District	Solving Ireland's Housing Step by Step
10.40-11.20	Moderator: Lara Oyedele, CEO, Lara Homes Ltd & Black on Board Ltd Panellists: Róisín Fitzpatrick, Immigration Partner, Deloitte Ireland, Ciara Whyte, Fundraising Partnerships Ireland, Movember Charity & Mark Whitehead, Construction Director, CPAC Modular	Building a Resilient Workforce: Attracting and Retaining Skilled Construction Talent
11.20-11.40	COFFEE BREAK & NETWORKING	
11.40-12.00	Dr. Karl Crowley, IKON Strategic Initiatives and Partnerships Manager, Kingspan Group	The road to Lower Embodied Carbon / Circularity in the construction industry
12.00-12.40	Moderator: Carol Tallon, Director, Property District Panellists: Tony McLoughlin, Managing Director of Planning, Design, Manufacturing, and Operations, Glenveagh Fireside, Ger Fahey, Head of Commercial Ireland & UK, Remagin, Pat Kirwan, Director, C+W O'Brien Architects, Eoin Waldron, General Manager, Castle Modular, Ronan Lonergan, Design Lead, Cairn Homes PLC & Dick Clerkin, Managing Director, Clerkin Consulting	Voices of the Irelands MMC Sector: Priorities and Perspectives for a Sustainable Future
12.40-12.55	COFFEE BREAK & NETWORKING	
12.55-13.00	David Keniry, Keniry Advisory Services	Afternoon Remarks
13.00-13.20	Darragh O'Brien TD, Minister for Housing, Local Government and Heritage of Ireland	Ministerial Address
13.20-13.40	Emily Maguire, Director, Covolve	Sharing the Advantage: The transition to digital construction
13.40-14.20	Moderator: Dave McAuley, Founder & CEO, Bitpower.ie Panellists: Garry Connolly, Founder & CEO, Host in Ireland, Mark Varian, Head of Projects and Construction, Eversheds Sutherland, Gary Watson, Country Manager Ireland, Keppel DC & Maurice Mortell, Non Executive Director, Ethos Engineering	Is Ireland Destined to Become a Secondary Data Hosting Location?
14.20-14.40	Eamonn Halpin, Sector Head (Financial Advisory), National Development Finance Agency	Presentation from the NDFA
14.40-15.20	Moderator: Gillian Hegarty, Senior Manager, Capital Projects and Infrastructure, PwC Panellists: Mila Lopez Simon, Managing Director – UK and Ireland, Invesis, Simone Mendonça, Senior Project Manager, Bechtel & Aine Walsh, Independent Consultant	How PPPs can help meet Ireland's infrastructure challenges
15.20-15.25	David Keniry, Keniry Advisory Services	Closing Remarks



NATIONAL
CONSTRUCTION
SUMMIT 2024

In Partnership
With



ela[container]



All presentations/timetables are subject to change. Please check with onsite event timetable on the day.

About the Sponsors



Kingspan Group is delighted to support the 2024 National Construction Summit and look forward to meeting with industry colleagues at Ireland's largest construction industry event.

Since our establishment in Ireland in the 1960s, we have grown into a global leader in high-performance insulation and building envelope solutions, employing more than 22,500 people and operating over 200 manufacturing sites in 80 countries.

Today we are organised around five operating divisions – Insulated Panels, Insulation, Data + Flooring, Light, Air + Water and Roofing + Waterproofing – which together make a range of high-performance products to help deliver sustainable buildings that are energy-efficient, optimise natural resources and promote the wellbeing of those who work, live and play in them.

Over the last decade, we have intensified our focus on working towards a net-zero emissions built environment, bringing new products and new initiatives to the market. Our efforts to decarbonise our product offering are spearheaded by Planet Passionate, our 10-year global sustainability programme that aims to tackle three big global challenges; climate change, circularity and protection of the natural world. The programme features ambitious, science-based targets that are aligned with a 1.5°C scenario.

In a bid to achieve net-zero carbon manufacturing by 2030, we have already achieved a 65% absolute reduction in our scope 1 and 2 emissions since 2020, and aim to reduce the carbon intensity of our primary supply-chain partners by 50% by 2030. We also have measurable targets on harvesting rainwater, eliminating waste to landfill, increasing use of recycled materials, and more.

The construction and buildings sector are responsible for almost 40% of carbon emissions and 30% of all waste generated, with the materials and construction phase of buildings responsible for 11% of all global energy-related carbon emissions.

We believe advanced material science and digitalisation hold the key to solving these challenges. We have focused our innovation on two main strategies: refining existing products with lower carbon alternatives, and exploring new bio-based materials and solutions.

Offering a full spectrum of insulation solutions that can meet the challenging requirements faced by the 21st century-built environment is core to our innovation

strategy. Central to this is IKON, our global innovation centre, dedicated to finding innovative solutions for sustainability, performance and efficiency in construction.

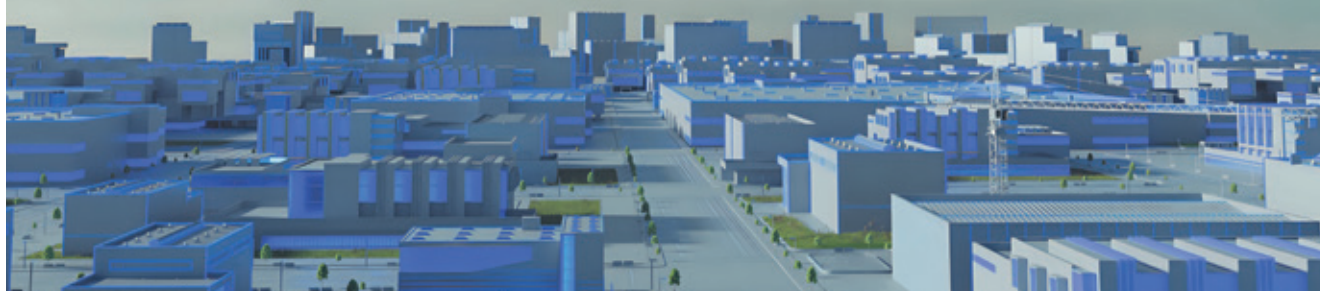
An example of our latest innovations is the recently launched new lower embodied carbon QuadCore LEC insulated panel - one of the highest performing insulation technologies in terms of thermal efficiency. Plus, we launched two further LEC products with RMG600+ our lowest ever embodied carbon raised access floor panel and Tate Grid LEC structural ceiling solution.

Last year we also unveiled HemKor, a product largely made of hemp, a fast-growing bio-based material, representing another of our product innovations as part of our strategy to provide a full-spectrum of insulation solutions. Furthermore, we launched AlphaCore, our first Euroclass A2s1d0 insulation product, offering a slim solution when compared with traditional Euroclass A-rated alternatives.

This demonstrates our commitment to further develop building envelope solutions that help minimise the carbon footprint of both existing and new buildings, or, as we say, to help make 'better buildings for a better world'.



QuadCore™ LEC
LOWER EMBODIED CARBON SOLUTIONS



Architecture, Design, Planning & Fit-Out

Architecture, Design, Planning & Fit-Out

Times	Name	Topic
9.55-10.00	Paul O'Doherty, Journalist & Broadcaster	Opening Remarks
10.00-10.20	Henry Thompson, Director, OldBuilders Company	Insulating historic buildings, moisture cold bridging issues
10.20-10.40	Mark Mulville, Head of School of Surveying and Construction Innovation, TU Dublin	Dwelling Overheating in Cool Climates: Key Factors in Ireland
10.40-11.00	Niall McCarra, BSc., LEED AP BD+C - Retrofit Program Manager, Kingspan Insulation	Designing for a Successful Building Retrofit
11.00-11.20	COFFEE BREAK & NETWORKING	
11.20-11.40	Brian Cody, Architect, Buldeco OffSite Architecture	Nordic Design in the Irish Landscape
11.40-12.00	Gretta Murphy, Commercial Sales & Project Co-Ordination, Graepels	Elevating Architectural possibilities with Graepels Picture Perf
12.00-12.20	Amanda Hughes, Ergonomics Expert, Blum UK	Ergonomics and the Age Explorer
12.20-12.40	Angela Murphy, Design Director, AM Design	Using restored buildings within multi-use developments
12.40-13.20	LUNCH & NETWORKING	
13.20-13.40	Eleanor Clarke, Ireland's #1 Spatial Interior Designer, Cobelis Design Studio	How you can avoid becoming the next renovation fashion victim!
13.40-14.20	Moderator: Paul O'Doherty, Journalist & Broadcaster Panellists: John Foley, Owner & Director, Lifesize Plans Leinster Team, Dr. Daniel McCrum, Construct Innovate, Dainius Prakapavicius, Managing Director, iDomus Construction	Innovations in Building Design and Construction Techniques
14.20-14.40	Audley English MBE, Director, Buldeco Offsite Architecture	MMC Global Disruptors
14.40-15.00	James Cousins, Managing Director & Principal Consultant, Wave Dynamics	Acoustics and Modern Methods of Construction
15.00-15.20	Dominic Parkinson, Associate Director, Amplitude Acoustics	Repurposed Buildings for Residential - Acoustic Challenges
15.20-15.25	Paul O'Doherty, Journalist & Broadcaster	Closing Remarks



ela[container]



All presentations/timetables are subject to change. Please check with onsite event timetable on the day.



Building Futures

At CPAC Modular, we recognise the positive impact our modular buildings have on the built environment.

Working to the highest ISO safety and quality standards, our team is fully committed to delivering compliant building solutions to meet the current and future needs of our clients

Using our extensive experience and LEAN principles throughout our business, we create modern sustainable spaces for a variety of use cases.

Bright futures are built in our buildings.

cpac[®]
Modular

cpac
Framing

www.cpacmodular.com



Visit our VR campus on your phone today to experience our Modular Building Solutions

Data Centres & Critical Infrastructure in Association with Host in Ireland

Data Centres & Critical Infrastructure in Association with Host in Ireland

Times	Name	Topic
9.55-10.00	Garry Connolly, Founder, Host in Ireland	Opening Remarks
10.00-10.30	Moderator: Dave McAuley, Founder & CEO, Bitpower.ie Panellists: Chris Collins, Country President, Schneider Electric, Gary Watson, Country Manager Ireland, Keppel DC & Maurice Mortell, Non Executive Director, Ethos Engineering	Is Ireland Destined to Become a Secondary Data Hosting Location?
10.30-11.00	Moderator: Adrian Parry, Hyperscale Sales Manager, EMEA, Commscope Panellists: Anthony McDermott, Director, Mitchell McDermott, Vincent Byrne, Data Centre Partner & Consultant Programme Manager, Eaton EMEA & Eoin Dineen, Operations Director, LPI Group	How big is the Irish Retrofit opportunity?
11.00-11.20	COFFEE BREAK & NETWORKING	
11.20-11.50	Moderator: Michelle Wallace, Head of Operations and Community, Host in Ireland Panellists: Lisa Duignan, Director, Turner & Townsend, Fergus Barry, Group Head of Human Resources & Associate Director, Kirby & Sean Cavin, Senior Construction Project Manager, Equinix	Talent Gap in Digital Infrastructure
11.50-12.20	Moderator: Arthur O'Brien, Managing Director, C+W O'Brien Architects Panellists: Peter Lonergan, Associate Director, Ardmac, Tom De Vooght-Johnson, Managing Director, Modulise & Darren Territt, Sales Director Ireland, Anord Mardix	Prefabrication / modularisation: Has it's time finally come?
12.20-12.40	Garry Connolly, Founder, Host in Ireland & Aiden Cawley, Business Head for Electrification and Automation, Siemens	Digitalisation & Decarbonisation, the two of the biggest challenges and opportunities of the current era
12.40-13.40	LUNCH & NETWORKING	
13.40-14.00	Lincoln Booth, VP - Corporate Development, Compass Datacenters	Beyond Dublin: The Factors that Will Shape the Future of Data Center Development Outside of Ireland's Capital
14.00-14.20	Sharon O'Rourke, Senior Research Executive, Construction Information Services (CIS)	Bridging the Past and Future: Planning & Construction Volume on Ireland's Data Centre Landscape
14.20-14.50	Stephen Proctor, Partner, McCann FitzGerald & Colm Milner, Regional Commercial Director – Data Centres, Sisk	Navigating Challenges of Procuring and Delivering Data Centres
14.50-15.10	Advayta Zadoo, Data Engineer, Oneview Healthcare	Regulatory Compliance and governance in data management
15.10-15.15	TBC	Closing Remarks



In Partnership With



ela[container]



All presentations/timetables are subject to change. Please check with onsite event timetable on the day.

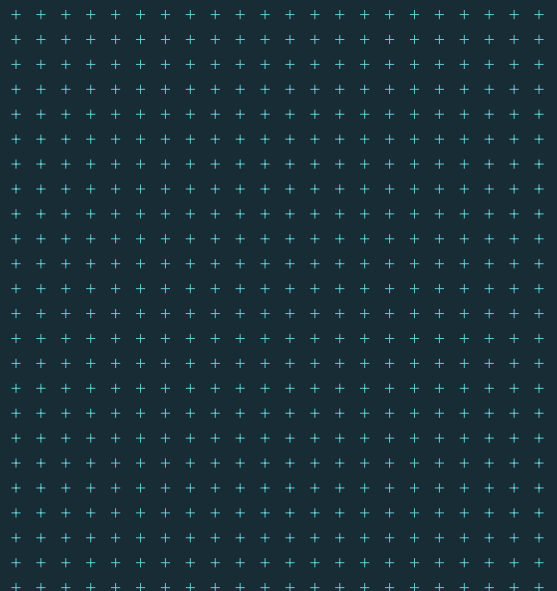


High quality modular buildings delivered on time and on budget

Come and discuss your upcoming projects with our team of experts. See us outside, or at stand D6 near the main stage!

portakabin.com

Porta and Portakabin are registered trademarks. © Portakabin 2024.
Portakabin Limited, Yorkon House, New Lane, Huntington, York, YO32 9PT.
Registered company number 685303. 2466/03/24.



Facilities Maintenance & Management / Health & Safety

Facilities Maintenance & Management (AM)

Times	Name	Topic
9.55-10.00	Barry Prost, Chair & Co Founder, Rent a Recruiter	Opening Remarks
10.00-10.20	Barry Prost, Chair & Co Founder, Rent a Recruiter	The 6 Key Recruitment Trends Employers in Construction are Adopting in 2024
10.20-10.40	Peter Hamilton, Sales & Specification Manager, Kingspan	Delivering a sustainable water management strategy with Kingspan Klargester
10.40-11.00	Nathan Ghundoo, Digital Services Business Director, Schneider Electric	Optimising the total cost of ownership for electrical infrastructure
11.00-11.20	George Harold, CEO, Fexillon	Standards-led Building Information Management for FM & Operations
11.20-11.40	Martin Curran, Managing Director, Ermen Systems	Safe Continuous Sanitization for all building types
11.40-12.00	Peter McCaul, CEO, Exact Comms	Revolutionizing Facility Management: The Future of Contactless Compliance and Time & Attendance Systems
12.00-12.20	Aidan Cullinane, NEIS Product Owner, Health Service Executive	The Importance of structured data to support O&M operations within an IWMS environment. (NEIS)
12.20-12.40	Oliver Murray, Matterport Digital Specialist, Hitechiques	Matterport and Simlab – Making facility manager’s dreams come true
12.40-13.20	LUNCH & NETWORKING	

Health & Safety (PM)

13.20-13.40	Damian Donlon, CEO, dulann Ltd	EHS Software - Building the Business Case for Investment
13.40-14.00	Damien O'Connor, Irish Country Manager, International Powered Access Federation	IPAF - Helping contractors to reduce the injuries associated with working at height
14.00-14.20	Niamh Bonner, Health & Safety Advisor, Vision Contracting	Harnessing technology for improved safety outcomes
14.20-14.40	John Kelly, Manager, LOETB National Construction Training Campus	Health & Safety training within the Construction Sector
14.40-15.00	Annette Nash, Managing Director, Theatre at Work	Engaging Staff in Safety - The Psychology of Behavioural Safety through Theatre
15.00-15.20	Kieran O' Reilly, CEO & Founder, All Set Workplace	Workplace Injuries: Lessons from High Performance Sport Optimising Health to Maximise Performance
15.00-15.05	Barry Prost, Chair & Co Founder, Rent a Recruiter	Closing Remarks



NATIONAL
**CONSTRUCTION
SUMMIT 2024**

In Partnership
With



ela[container]



All presentations/timetables are subject to change. Please check with onsite event timetable on the day.

Temporary room solutions – fast, flexible and easy to install



Mobile room solutions
www.ela-container.com

ela[container]

Modern Methods of Construction in Association with MMC Ireland

Modern Methods of Construction in Association with MMC Ireland

Times	Name	Topic
9.55-10.00	Carol Tallon, Director, Property District	Opening Remarks
10.00-10.15	Mark Whitehead, Construction Director, CPAC Modular	Modular Student Accommodation
10.15-10.30	Stan Admiraal, Application Engineer, SIGA	Off Site Manufacturing and Temporary Protection
10.30-10.45	Colin O'Murray, Head of Commercial, Portakabin	How a Modular Solution can Help your Business Become More Sustainable
10.45-11.00	John Clancy, Account Manager - Ireland, ELA CONTAINER	Modular Construction and its Multi-Sectoral Benefits
11.00-11.15	Donnacha Tobin, Divisional Director, Capcon Engineering	Designing efficient, sustainable rainwater drainage systems
11.15-11.30	Michael Keohane, Director & Head of Development, Framespace	Modular Metric – The Numbers Around Modular Construction
11.30-11.55	Carol Tallon, Director, Property District & Tony McLoughlin, Managing Director of Planning, Design, Manufacturing, and Operations, Glenveagh Fireside	Fireside Chat with Glenveagh's Tony McLoughlin to talk about the ambitions of NUA Manufacturing to scale housing delivery
11.55-12.40	LUNCH & NETWORKING	
12.40-13.15	Moderator: Caitriona Bergin, Consultant, Future Cast Panellists: Jo Cahalin, Manager - Future Building Skills, Education and Training Boards Ireland, Claire Lundy, Rope Rope Access Technician & Mary Whitney, Director of Education, Future Cast	Women in Construction & Quarrying
13.15-13.30	Hugh Whiriskey, Founder & Director, Partel	Importance of Weather Tightness and Building Protection for Modern Methods of Construction
13.30-13.45	Stephen Grant, BIM Manager, Petruf	The benefits of implementation of precast concrete systems with the utilizations of 3D modelling and BIM principles
13.45-14.00	Richard Kowalski, Technical Director, O'Reilly Precast	Transforming Construction: O'Reilly Precast's Role in Offsite and MMC
14.00-14.20	Anne Daw, Associate & Head of MMC Delivery, HLM Architects & Philip Watson, Director & Head of Design, HLM Architects	MMC: A Platform for Housing Success
14.20-14.35	Christos Michealides, Sales, Falk	Cradle to Cradle: How FALK can recycle insulated PIR panels
14.35-14.50	Fireside Chat: Eoin Daly, Managing Director, Procon Modular & Carol Tallon, Director, Property District	MMC: A rapid response to State Emergency Projects
14.50-15.05	Kevin Hickey, Design Manager, BAM/MHI	MHI (Modern Homes Ireland) – How to incorporate modular construction into your project
15.05-15.20	Dick Clerkin, Managing Director, Clerkin Consulting	Building the Future: Navigating Challenges and Risks in Scaling Offsite Manufacturing for Growth
15.20-15.25	Carol Tallon, Director, Property District	Closing Remarks



In Partnership With



ela[container]



All presentations/timetables are subject to change. Please check with onsite event timetable on the day.

NATIONAL
**MANUFACTURING
& SUPPLY CHAIN**
CONFERENCE & EXHIBITION

RDS Simmonscourt, Dublin, May 28th & 29th



In Partnership With



**Engineering
Industries Ireland**
Ibec

RDS Simmonscourt, Dublin, May 28th & 29th 2025

REGISTER NOW AT WWW.MANUFACTURINGEVENT.COM

To Exhibit, Sponsor or Speak, email colin@prempub.ie. Register for free on www.manufacturingevent.com

 www.manufacturingevent.com

 Manufacturing & Supply Chain Conference & Exhibition

 @NationalMSC #ManufacturingExpolRE

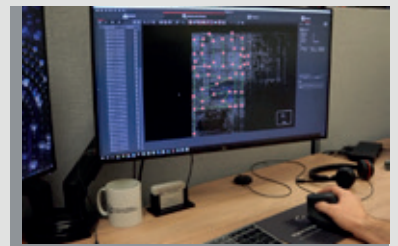


DIGITAL DESIGN AND CONSULTANCY



Our Services:

- Point Cloud Surveying
- Fire Protection Design
- Mechanical Design
- Electrical Design
- BIM Services



We are at the National Construction Summit! Visit us at stand A4

E. Info@digital-design.ie T. +353 (42) 940 9212

Project Controls / Construction TECH & BIM

Project Controls (AM)

Times	Name	Topic
9.55-10.00	Paul Kirwan, Director, GCS Consulting	Opening Remarks
10.00-10.20	Pádraig Neylon, CEO & Founder, +AddJust	Turning Collected Data into Connected Data
10.20-10.40	Ciaran Brennan, CEO, LiveCosts	Implementing smart technology for procurement and tracking of material expenses
10.40-11.00	Christine McLean, President, ACOSTE	Finding a way through risk management with the help of professional body engagement
11.00-11.25	Archie O Donnell, Senior Sustainability Specialist, Kosmos	KOSMOS manage carbon on projects, by creating an intrinsic link between Cost and Carbon. Through digital classification and interoperability across project data platforms, we track carbon targets and budgets, to reduce uncertainty and enhance credibility. Reporting sustainability objectives through cost metrics
11.25-11.50	Ciaran Nevin, Senior Manager, Capital Projects & Infrastructure - PwC Ireland	Are Your Decisions Biased? How cognitive bias affects projects and how to confront it
11.50-12.20	Moderator: Paul Kirwan, Director, GCS Consulting Panellists: Ross Griffin, Founder, Kosmos, Gillian Hegarty, Senior Manager, Capital Projects & Infrastructure, PwC Ireland & Craig Owens, Director, Turner and Townsend	Exploring the role of Project Controls in delivering the Project Ireland 2040 Major Infrastructure Project Pipeline. What will be the role of Project Controls in ESG reporting and disclosures?
12.20-12.40	LUNCH & NETWORKING	

Construction TECH & BIM (PM)

12.40-13.00	Tina Calder, Chief Vision Officer, Excalibur Press	Using AI To Supercharge Your Construction Firm's Marketing Efforts
13.00-13.20	Sean O'Dwyer, AEC Division Manager, Symetri Europe	Mastering Digital Efficiency in Construction
13.20-13.40	Tamas Borodi, Regional Sales Manager, UK/IE, OpenSpace	Unlock the Power of BIM in the Field
13.40-14.00	Jonathan Rogers, BIM Manager, Covolve	Digital Project Delivery: A manufacturer's approach to implementing BIM processes and standards on a global scale
14.00-14.20	Dr. Alan Hore, Co-Founder & Director, Construction IT Alliance (CitA)	CitA: How we can support your Digital Journey Today
14.20-14.40	Rodney Dass, Operations Manager, Tantek 4D	360° Insight: Lifecycles, Asset Digital Capture, and Sensor Integration in Digital Twins
14.40-15.00	Neil Cronin, Associate Director - Project Management, Arcadis	Understanding Generative AI in Construction
15.00-15.20	Jarek Woznica, Managing Director, GRIP Software Solutions	Digital Transformation Case Study: Streamlining Quality Control in Road Construction
15.20-15.25	Tina Calder, Chief Vision Officer, Excalibur Press	Closing Remarks



NATIONAL
**CONSTRUCTION
SUMMIT 2024**

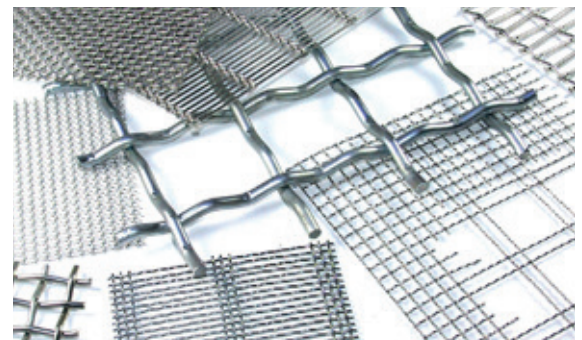
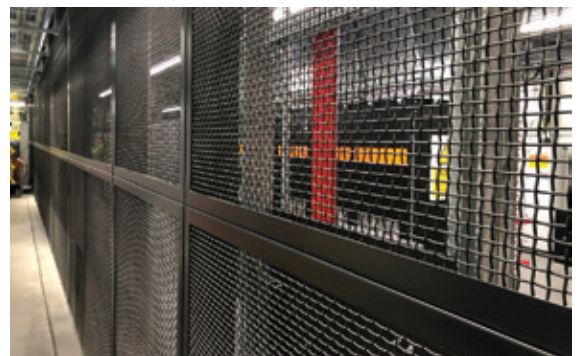
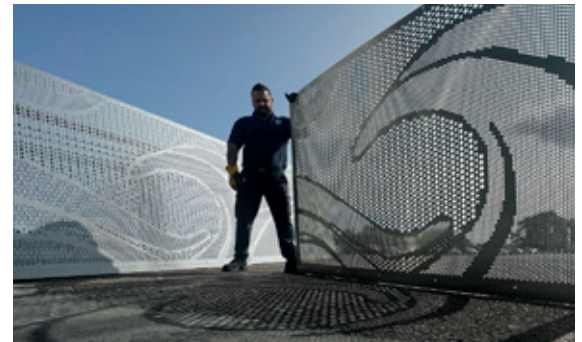
In Partnership
With



ela[container]



All presentations/timetables are subject to change. Please check with onsite event timetable on the day.



Manufacturers of Engineered Metal

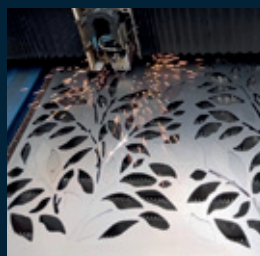
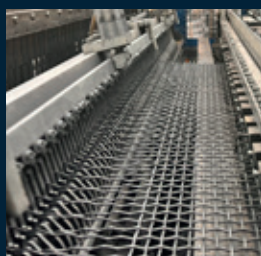
Discover Graepels, Your Partner for Quality Metal Solutions.
Manufacturers of Engineered Metal Products Since 1959.



NATIONAL
CONSTRUCTION
SUMMIT 2024

Visit us at **Stand 152**
Find us on Social: [@Graepels](#)

Perforated Metal | Woven Wire | Laser Cutting | Fabrication



Sales@Graepels.com **Ire:** +353 21 477 2105 **UK:** +44 1925 229809

Smart, Green & Passive Construction and NZEB

Smart, Green & Passive Construction and NZEB

Times	Name	Topic
9.55-10.00	Padraig Boland, FET Manager, Strategic Projects, Laois and Offaly Education and Training Board	Opening Remarks
10.00-10.20	Pamela Sheridan, Operations Manager, Supply Chain Sustainability School – Ireland & Rick Dunn, Business Development Manager, Supply Chain Sustainability School – Ireland	Fostering Sustainability in the Construction Industry: Insights from the Supply Chain Sustainability School
10.20-10.40	Stephen Prendiville, Partner, Sustainable Infrastructure Leader, Deloitte	"Infrastructure for Good" - the new standard for infrastructure planning and delivery
10.40-11.00	Graham Murray, Director of Projects Ireland, Schneider Electric	The Fastest Path to Net Zero
11.00-11.10	COFFEE BREAK & NETWORKING	
11.10-11.40	Fireside Chat: Laurence Downs, Sales Director at Failte Solar & Gearoid Whelan, Managing Director, JFW Renewables	Solar Solutions – Maximising the integration of Solar Energy into Commercial & Residential Building Projects
11.40-12.00	Darren Kinsella, Business Development for New Energy Landscapes, Schneider Electric	How to gain Resilience & Independence with your Energy Transition
12.00-12.20	Dora Rebola, Senior Sustainability Manager and Architect, ONE for ALL	BREEAM and Climate Change Resilience
12.20-12.40	Mike Teahan, Technical Director, PhaseStor	Thermal Energy Solutions
12.40-13.20	LUNCH & NETWORKING	
13.20-14.00	Moderator: Lara Oyedele, CEO, Lara Homes Ltd & Black on Board Ltd Panellists: Darren Kinsella, Business Development for New Energy Landscapes, Schneider Electric, Angela Murphy, Design Director, AM Design, Bartłomiej Przygodzki, Business Development Manager, Northern-Markets, Modular System & Radosław Krzemiński, Head of Constructors, System 3E	Sustainable Buildings: Designing for a Greener Future
14.00-14.20	Marek Zabrzycki, Business Development Manager, Sendom Domy Drewniane	House in 8 Hours
14.20-14.40	Michael Girvan, Sustainability Manager, Mivan	The importance of data in the decarbonisation of the construction sector
14.40-15.00	Dainius Prakapavicius, Managing Director, iDomus Construction	Engineered Timber building method for Irish Domestic Construction Market
15.00-15.20	Dermot Kelly, Technical Director - Ground Improvement, Powerbetter Developments Limited	Ground Improvement using Rapid Impact Compaction (RIC-9T), Polygon Compaction Roller (PCR-26T) and Soil Improvement / Modification (SIM-Lime/Cement – Soil Stabilisation) Techniques with Digital Monitoring
15.20-15.25	Padraig Boland, FET Manager, Strategic Projects, Laois and Offaly Education and Training Board	Closing Remarks



NATIONAL
**CONSTRUCTION
SUMMIT 2024**

In Partnership
With



ela[container]



All presentations/timetables are subject to change. Please check with onsite event timetable on the day.



Explore the Future of Construction with Polish Innovation

Discover how Modern Methods of Construction (MMC) offer a promising solution to housing market challenges. By leveraging factory settings, MMC streamlines construction, allowing for faster completion of units through prefabricated components, reducing carbon emissions associated with traditional on-site construction.

Explore cutting-edge innovations at our **stand I18**. Engage with industry leaders and explore pioneering technologies from our exhibitors: Multicomfort, Modular System, Sendom, Qmodular, Pekabex, Woodcore House, SYSTEM 3E and ALEHALE.

Connect with the Polish Investment & Trade Agency (PAIH) to find the best suppliers and partners from Poland. Contact us for advice on sourcing products and services from Poland, exploring investment opportunities, and navigating the Polish market.

www.paih.gov.pl/en/; e:mail: joanna.kobalczyk@paih.gov.pl



MODERN HOMES IRELAND

3D Volumetric Modular Manufacturer

MHI constructs quality assured steel-framed homes and commercial buildings within a precision-controlled factory environment. Our 10 story NSAI certified volumetric modular system delivers units to site up-to 95 per cent complete. MHI was established in 2016 and since then remains the only NSAI certified volumetric modular provider in Ireland.

We have successfully delivered over 1800 units across the UK and Ireland Construction sector. Our portfolio includes a combination of various commercial developments, social and affordable and high-end residential housing. Based in Ballyjamesduff, our modern facility has the capacity to produce more than 400 units annually. MHI has a unique and immediate offering and has a proven track record of delivering precision engineered, high quality and sustainable volumetric modular solutions for our many clients.

Talk to us at Stand I44
for more details.



MHI OFFER:

- Residential (Housing/Apartments)
- Commercial, Education & Hotels sectors
- Bathroom Pods
- Steel Frame Systems
- Structural Wall Systems
- Lattice Roof Trusses
- Design Consultancy

📍 A82 XE35

☎ 049 4310140

👤 Sharon Lynch or Kevin Hickey

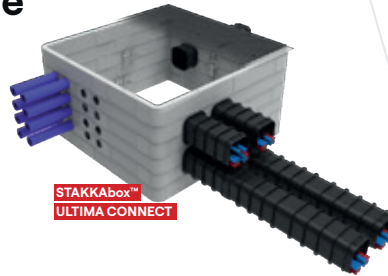
🌐 www.mhi.com

✉ info@mhi.ie

THE *LEADING* PARTNER OF INNOVATIVE AND SUSTAINABLE INFRASTRUCTURE *SOLUTIONS* >>>



**Sustainable
Network
Access
Solutions**



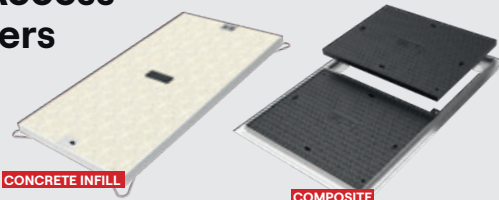
STAKKAbox™
ULTIMA CONNECT



ENERGY



**Versatile Range
of Access
Covers**



CONCRETE INFILL

COMPOSITE



RAIL



**Underground Multiple
Duct *Cable Protection*
System**



MULTIDUCT™



WATER



Want to *know more?*

Reach out to one of the **team**
by **scanning here:**



SCAN ME



TELECOMS



Telephone: +44 (0)28 38 313 100
Email: info@cubis-systems.com
www.cubis-systems.com



National Construction Summit 2024 - Floor Plan



NATIONAL
**CONSTRUCTION
SUMMIT 2024**

In Partnership
With



National Construction Summit 2024 - Exhibitor Index

Exhibitor Index

3:rock	C19A	Cupix	I49	Key Plastics	I39	Safetech Consulting & Training Ltd	C12A
A.f.t Blinds	C19	Digital Design and Consultancy Ltd	A04	KeyGreen	A01	Safety Jogger Works	T20
ACO TECHNOLOGIES plc	I20	Digital Doors	C29	Keypoint	I60	Safety Solutions Group	T19
Adfil Ltd	I48	Drivalia	F04	Kingspan	H09	Salto Systems Limited	B15
Adrey Engineers	L01	Dublin Chamber of Commerce	T10	Kytun	F12	Samsung	C01A
Advanced Manufacturing Training		dulann	C30	Law Society	C18A	Schluter-Systems	F09
Centre of Excellence	B06A	Dunne Ecofit Ltd	T13	Levelling Equipment Services	B02	Secora Consulting	M12
Advanced Safety	I55	DUOL Ireland	D13	Life Credit Union	C22A	Securitas	I36
Aerobarrier	I32	EasyGo Charging Ltd	T08	Liquid Rubber World	K14	SES Water Management	M01
Albatel	T02	Ecodepo	I61	LiveCosts	D08	Sigma Wireless	I50
Alexander Boyd	B14	Eire drone services	F06	Macmarts	C18	Simplicity Group	I24
All About Trees	C35	EJ Co	D17	Manhole Covers Ireland Ltd	B01	SmartOffice	C02A
Allied.ie and Vitrintec	F11	ELA Container	H07	MarineServices.ie	T01	Snickers Workwear	I02
Alupress Limited	H13	Elevator Data Solutions	C03A	Media Print	C07A	Solgrid	C13A
Ampack	I51	Elite Woodworking Machinery	C23	MH International	C14	Sprint Digital	C31
Amvic Ireland	H06	Eliteform Manufacturing	M09	MHI	I44	St. Andrews	H11
Anchor Bay Construction		Enerpower	C22	Midsummer Renewables	I14	Stacked	C17A
Accessories	C11A	ERS IT Solutions	G07	Mount Lucas	H08	Start Solar	H12
Arantico	A10	Everlux	B18C	Movember	M03	Steel Lintels Ireland	F10
Arch-1	I13	Excel Recruitment	C35A	MyRemote iot	M07	STIRA – Folding Attic Stairs Ltd.	B16
Armatherm Thermal Bridging		Failte Solar	I31	NiftiBusiness	I19	SustainIQ	C05A
Solutions	F02	Falk Ireland Ltd	I31A	Norspace Hire	F05	Symetri	D08A
Ashview Consultants	B13	Fantasy Lights Group	K13	Not One Iota	K12	Synergie Futureproofing Solutions	M08
Association for Project		FIELDWIRE by HILTI	C06A	Nouveau Design Management	B17	Text Tell Ltd	A08
Management	C27	Fire Protection Specialist	I37	NSAI	I41	Thermal Break Plates	C14A
Avantgard Agents	F08	FIRST BASE Ground Screws	B06C	O'Brien Facilities	I58	Thorntons Recycling	I12
B-Fluid Ltd	D12	Flanagan Fittings	D14	O'Reilly Training	T15	Timeworks	I22
BAM	J06	Fragomen	C10	OBW Technologies	C04A	Total Air Solutions	J05
Bath Fitter	H03	FutureCast	D04	OD3 BIM	F04	Total Materials Handling	I38
Beeswift Ltd	I08	Gahan and Long	K03	Open Space	I11	Trench Control Ltd	H05
Blue Chair Broker	L10	Gaia Smart Energy	E02	OSSM	I23	TSG Ireland	I26
Boss Cabins	J11	Galco Steel Ltd	F12C	Ovia	D15	TU Dublin Innovation	B06B
Box on Box	L07	GARO Electric Limited	J15	Oxford Professional Education		Universal Graphics	B11
BRE	B18A	GEV Technologies	C28	Group	M04	University of Limerick	C20A
Buronomic	C15	Glin National College	T18	Peninsula	I09A	Urban Metal Design	T02A
Cali Training Rigs	I57	Graepels	I52	PERI Ireland	C13	Valsir from Kernohan Distribution	C09
Celuplast	C21A	Harkess Electrical Wholesalers	M08B	Pipeline Ireland Limited	C32	Vision Built	B06
CEMS Environmental & Process		Head-Wind	G04	Pittman®	I56	VRF (Wireless Fire Detection)	H04
Controls Ltd	E04	Health & Safety Authority	I35	PMAC	M10	Wavin Ireland Ltd	C11
Certa	C10A	Hercules Building Systems	L05	Polish Investment & Trade Agency	I18	Weev	H10
CIAT	A07	Howden Insurance	C33	Portakabin Limited	D06	Whitty Security & Fire	J17
CIS	I21	hrc-europe	A05	Power Washing Ireland	I09	Workplace Relations Commission	I33
Coatek	J14	Hunter Marshall Remote		Precision-um	F12A	WWETB	D03
Connemara Wine and Design		Recruitment	J18	PREM Hospitality	C20	YB Fixings Ltd	C16
Gifting	C15A	Hybrid Technology Partners	C17	Priority Metrix	C01		
Containex	C04	iDomus Construction	F03	Procon Modular	I53		
Conway TV & Broadband	D11	IMI	C09A	Proflo Ltd	I28		
Coolmine	T06	In Granite Recon Ltd	E03	Prolift Handling Ltd	C08A		
Corporate Enforcement Authority	C34	IPAF - International Powered		Quadra Ltd	I34		
CPAC Modular	J08	Access Federation	I54	Quality Direct Supplies Ltd	M11		
CPAS – CIF Pension Administration		IPL Group	D02	Quality Freight	D16		
Services	G03	Irish Wire	I42	Remagin	J03		
Creagh Concrete Products Ltd	C12	Kavanagh Security	K11	Ripple Creative Ltd	B18		
Crown Curtain Tracks	I25	KDM Hire	C26	Rotho Blaas	E01		
CUBIC-Modulsystem A/S	I15	Kelly Bros International	G02	S-connect	L04		
Cubis Systems	F01	Kemwell Fire International Ltd	I59	Safeguard Systems	K04		

External displays
 Portakabin Limited
 ELA Container
 MHI





BETTER BUILDINGS FOR A BETTER WORLD

Kingspan is the global leader in high-performance insulation and building envelope solutions.



**PLANET
PASSIONATE**

kingspan.com



Kingspan®